

138°W 136°W 134°W 132°W 130°W 128°W 126°W

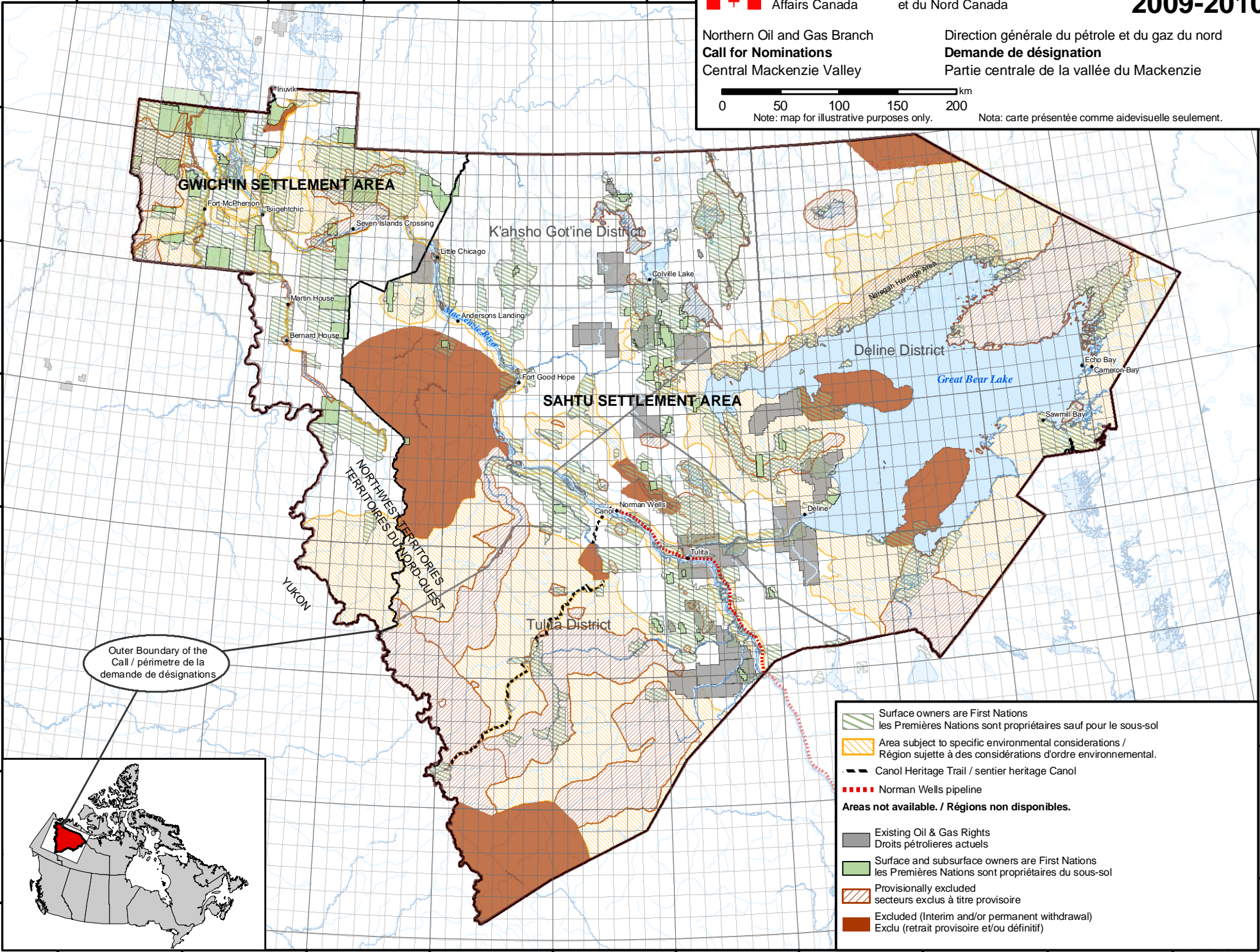
Northern Oil and Gas Branch / Direction générale du pétrole et du gaz du nord  
**Call for Nominations** / **Demande de désignation**  
 Central Mackenzie Valley / Partie centrale de la vallée du Mackenzie



Nota: carte présentée comme aidevisuelle seulement.



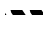





68°N  
67°N  
66°N  
65°N  
64°N  
63°N  
62°N

67°N  
66°N  
65°N  
64°N  
63°N  
62°N



Outer Boundary of the Call / périmètre de la demande de désignations



-  Surface owners are First Nations / les Premières Nations sont propriétaires sauf pour le sous-sol
-  Area subject to specific environmental considerations / Région sujette à des considérations d'ordre environnemental.
-  Canol Heritage Trail / sentier heritage Canol
-  Norman Wells pipeline
- Areas not available. / Régions non disponibles.**
-  Existing Oil & Gas Rights / Droits pétroliers actuels
-  Surface and subsurface owners are First Nations / les Premières Nations sont propriétaires du sous-sol
-  Provisionally excluded / secteurs exclus à titre provisoire
-  Excluded (Interim and/or permanent withdrawal) / Exclu (retrait provisoire et/ou définitif)

136°W 134°W 132°W 130°W 128°W 126°W 124°W 122°W 120°W 118°W