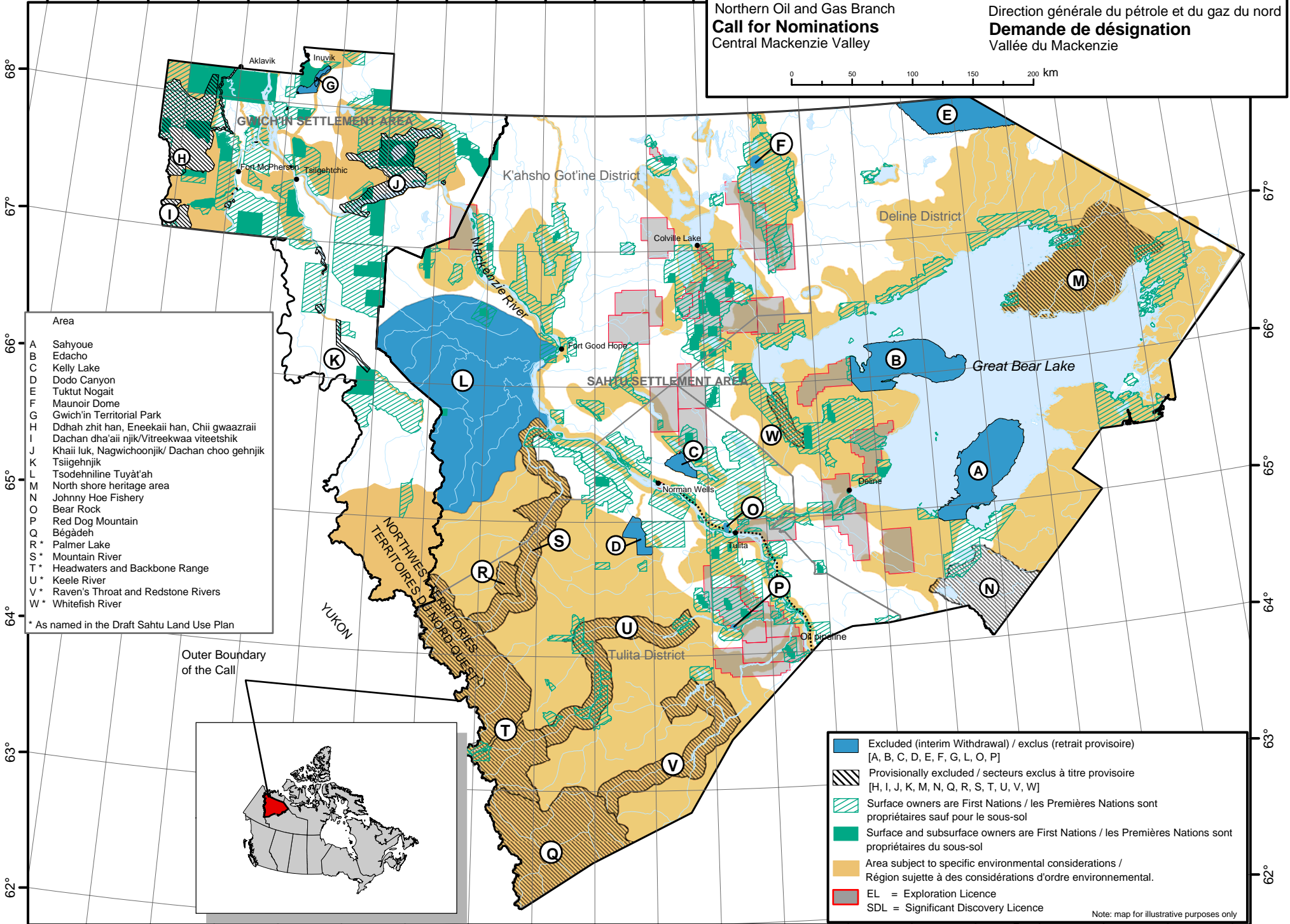
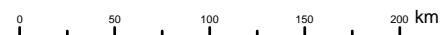




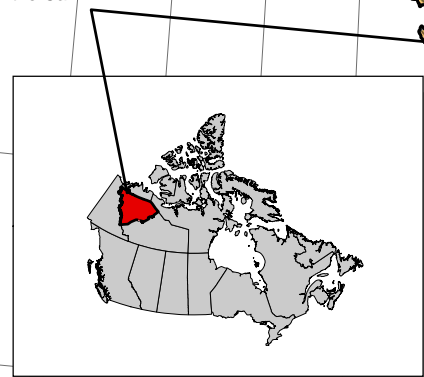
Northern Oil and Gas Branch  
**Call for Nominations**  
Central Mackenzie Valley

Direction générale du pétrole et du gaz du nord  
**Demande de désignation**  
Vallée du Mackenzie



- Area
- A Sahyoue
  - B Edacho
  - C Kelly Lake
  - D Dodo Canyon
  - E Tuklut Nogait
  - F Maunoir Dome
  - G Gwich'in Territorial Park
  - H Ddhah zhit han, Eneekaii han, Chii gwaazraii
  - I Dachan dha'aii njik/Vitreekwaa viteetshik
  - J Khaii luk, Nagwichoonyjik/ Dachan choo gehnjik
  - K Tsiigehnjik
  - L Tsodehniline Tuyat'ah
  - M North shore heritage area
  - N Johnny Hoe Fishery
  - O Bear Rock
  - P Red Dog Mountain
  - Q Bégadeh
  - R\* Palmer Lake
  - S\* Mountain River
  - T\* Headwaters and Backbone Range
  - U\* Keele River
  - V\* Raven's Throat and Redstone Rivers
  - W\* Whitefish River
- \* As named in the Draft Sahtu Land Use Plan

Outer Boundary of the Call



- Excluded (interim Withdrawal) / exclus (retrait provisoire)  
[A, B, C, D, E, F, G, L, O, P]
- Provisionally excluded / secteurs exclus à titre provisoire  
[H, I, J, K, M, N, Q, R, S, T, U, V, W]
- Surface owners are First Nations / les Premières Nations sont propriétaires sauf pour le sous-sol
- Surface and subsurface owners are First Nations / les Premières Nations sont propriétaires du sous-sol
- Area subject to specific environmental considerations / Région sujette à des considérations d'ordre environnemental.
- EL = Exploration Licence
- SDL = Significant Discovery Licence

Note: map for illustrative purposes only